

Catch The Rain

Practices, Rebate Amounts and Requirements

Residential properties are eligible to receive a lifetime total of \$2,500 per property in rebates. Amounts listed below are for residential properties. Details can be found at Whiteclay.org/CatchTheRain

Catch the Rain Practice	Residential Rebate Amount Total Maximum Rebate = \$2500/parcel	Practice Recommendations
Rain Gardens	Typical cost: \$4–25/sq. ft. Rebate: 50% total costs up to \$2500 max.	Recommended size: >100 sq. ft. Location must pass percolation test
Conservation Landscapes	Typical cost: \$4–10/sq. ft. Rebate: 50% total costs up to \$2500 max.	Recommended size: >100 sq. ft.
Permeable Paving Retrofit	Typical cost: \$35–65/sq. ft. Rebate: 50% total costs up to \$2500 max.	Recommended size: >100 sq. ft. of existing impervious surface (i.e. asphalt, cement). Must be installed by a certified ICPI contractor.
Pavement Removal	Typical cost: \$3–5/sq. ft. Rebate: 50% total costs up to \$2500 max.	Recommended size: >100 sq. ft.
Rain Barrels	Typical cost: \$100 - \$150 Rebate: \$50/barrel, 1 barrel maximum	Minimum size: 55 gallon barrel
Canopy Trees	Typical installed cost: \$25–250/tree (depending on size) Rebate: 50% total costs up to \$2500 max. (trees must be #10 size container or smaller to be eligible for rebate)	Recommended planting time: between Sept. 15 and April 30. Tree must be mulched and have protection from deer.

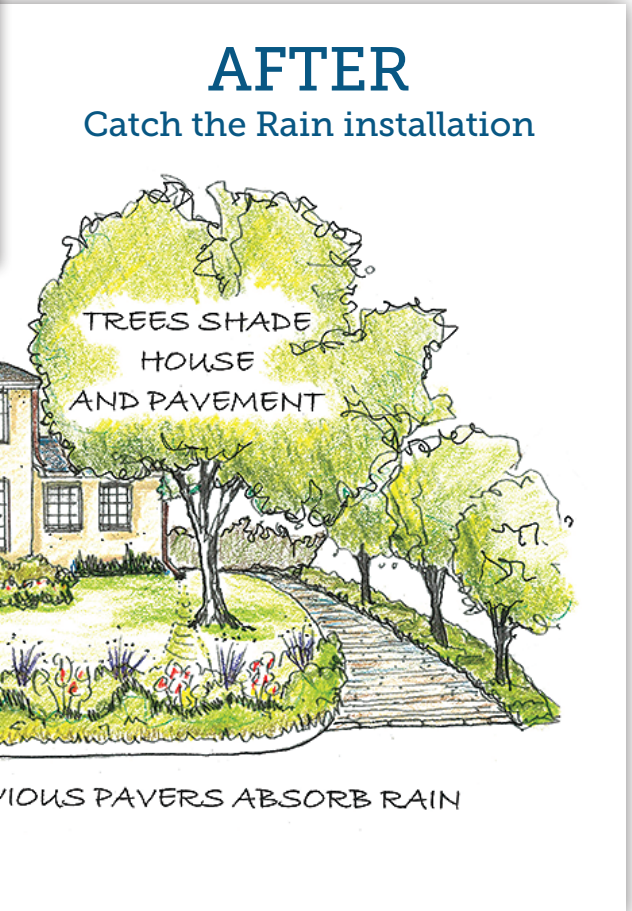
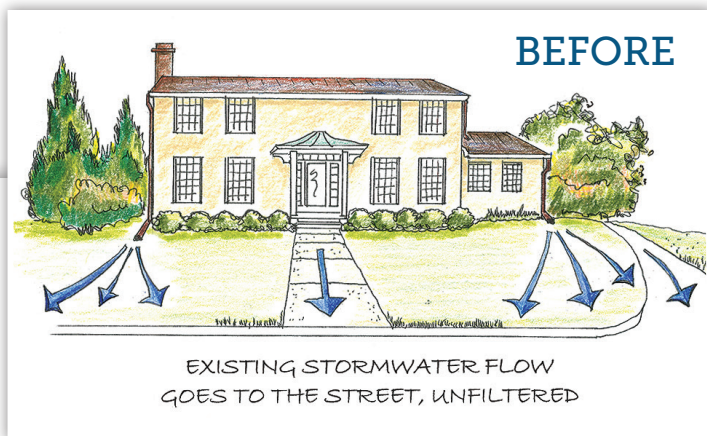
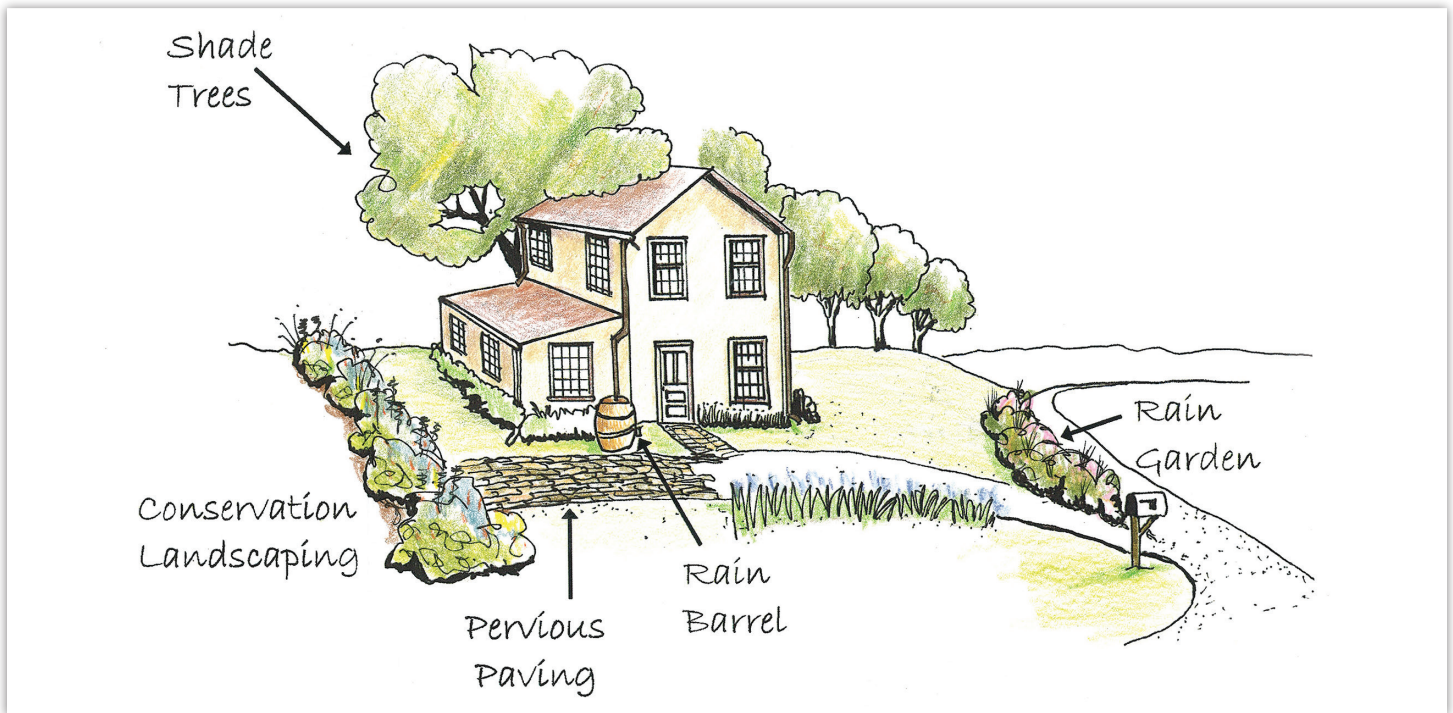
All projects must meet White Clay Watershed Association Catch the Rain requirements posted on our website at WhiteClay.org/CatchtheRain.

NOTE: Only properties located in the White Clay Watershed are eligible for this Program.

QUESTIONS? Email catchtherain@whiteclay.org or visit whiteclay.org/CatchtheRain for more information.



Catch The Rain in the White Clay Creek Watershed



AFTER Catch the Rain installation

LAWN
AREA IS
REDUCED

RAIN GARDENS
CATCH ROOF
RUNOFF

PERVIOUS PAVERS ABSORB RAIN